

IPX TRANSPORT

The private IPX solution that will open the world to you

Flexible and customizable connectivity solutions, adapt to your needs



MARKET CONTEXT

With just one interconnection to the IPX Network, Service Providers can achieve worldwide coverage with guaranteed end-to-end QoS.

IPX has proven itself as a solid solution for traditional telecommunication service, such as Messaging, Voice, Signalling or Data Roaming.

Furthermore, using IPX to implement ad-hoc communications solutions for less traditional or new service, such as providing

connectivity solutions to service platforms, is becoming more and more important to achieve fast and efficient deployments.

Our IPX Transport Service is part of our global IPX offering, which means it shares the same connectivity options and architecture as our other IPX services, and enables us to provide you with bespoke communications solutions.



Reliable, Flexible, Secure, the connection to a great communication ecosystem

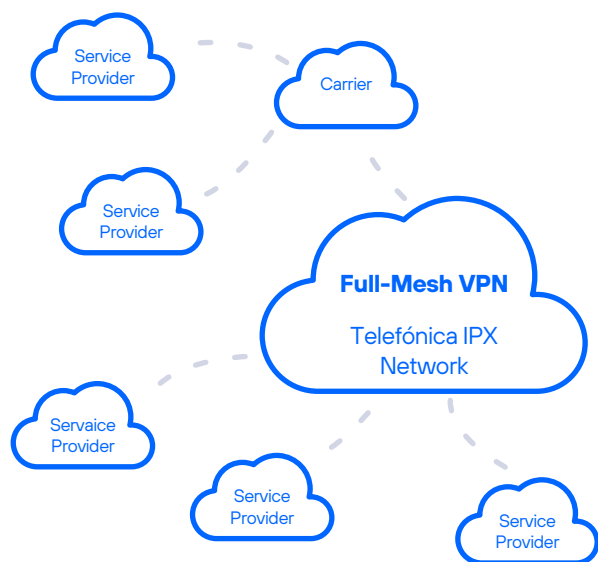
Get the most from our highly customizable IPX and learn how we can help you transport safely



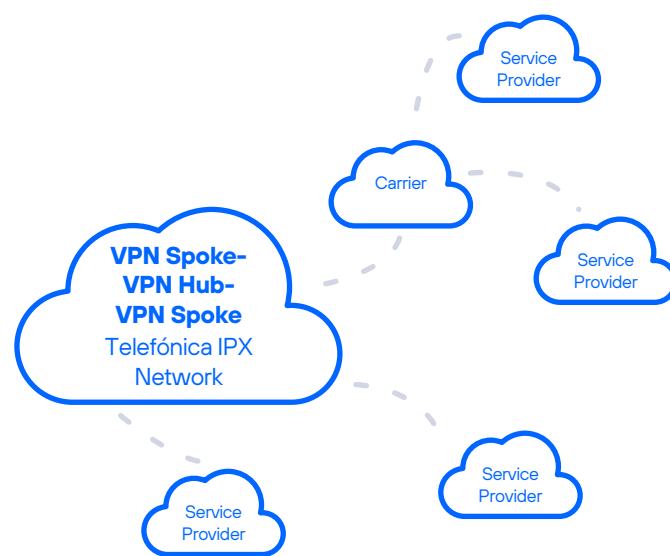
- Functionality compliant with the **standards set by the GSMA.**
- The service is **flexible** and can be adapted to your needs.
- Online access to **statistical reports** on both service use and tracking of SLA parameters.
- **Security is assured** by using VPNs and providing isolation from the Public Internet.
- **Extensive toolbox available:** VPN Topologies (Full-Mesh/Hub and Spoke), Private and Public IP supported, IPv4 and IPv6 supported, customizable IP filters and more.
- **IP address assignment:** we have the required accreditation to provide public addresses.
- **Quality of service and discard policies** which enable prioritization and guarantee the traffic for the specified applications.

CONNECTIVITY TOPOLOGIES

Full-Mesh Connectivity Topology



Hub and Spoke Connectivity Topology



How does IPX Transport help?

- Implemented in a **private and secure environment** which meets all requirements set by the GSMA.
- **Short time to market** to implement ad-hoc transport services.
- **End-to-end quality service** which can be tailored to specific needs and required security parameters.
- Supports **any kind of data or transport protocol**.
- **Dedicated and redundant connection to any Service Provider**, particularly those offering operating platforms.
- Provides a **private, transparent and service unaware transport layer** between any number and type of Service Providers, with guaranteed end-to-end QoS.
- **Guaranteed Service Level Agreements (SLAs)** provided.
- Connectivity via **over 100 Points of Presence** worldwide.
- **24x7 support and full monitoring** via our International Network Management Centre.

How to connect to our IPX?

- **Worldwide presence** combined with market leading ability to interconnect locally in Latin America and Europe.
- Three public peering points available to exchange IPX services: **Amsterdam, Ashburn and Singapore**.
- Access to selected regions of top **Public Cloud Providers**.
- Gigabit Ethernet speeds **up to 100G** available. Use of Link Aggregation possible.